

2025 PRIORITIES & ACTIVITIES

# Turn the Page STL

St. Louis' Chapter of the  
National Campaign for  
Grade Level Reading



Prepared by Lisa Greening, Executive Director



# About Turn the Page STL

## Mission:

Turn the Page STL is a city, county-wide literacy initiative dedicated to increasing the number of children that are reading at or above grade level by the end of third grade in the St. Louis community. Turn the Page STL is St. Louis' chapter of the Campaign for Grade Level Reading.

## Vision:

St. Louis is a community with no disparities in literacy, based on race or zip code. All children are able to read proficiently by the end of third grade, contributing to their long-term academic outcomes (eg. graduating from high school, career readiness), and personal well-being.

## Geographic Areas Served:

Our primary geographic focus includes the seven Promise Zone School Districts in St. Louis City and St. Louis County. Those include Ferguson-Florissant School District, Hazelwood Public Schools, Jennings School District, Normandy Schools Collaborative, Riverview Gardens, St. Louis Public Schools, and the School District of University City.

## Understanding:

Our work is viewed through a racial equity lens with the understanding that racial inequity in metropolitan St. Louis' public education system has contributed to generations of under literate citizens.



# 2025 Priorities & Activities

*--Based on our collectively-written strategic plan and current literacy needs, Turn the Page STL is focused on the following five priorities with activities.*

## Kindergarten Readiness

1.) Co-lead with UMSL-CIAC and the St. Charles School District the “**St. Louis Region Childhood Community Leadership Taskforce**” by connecting St. Louis early childhood stakeholders to applicable statewide supports and resources in order to empower families and connect communities. The Childhood Community Leader initiative is led by MO DESE’s Office of Childhood through a contract with United 4 Children.

2.) Lead the 2025 **Annual Early Educators Appreciation Event** with the City of St. Louis, LUME Institute, Ready Readers, RISE, Southside Early Childhood Center, St. Louis Community College, St. Louis County Library, St. Louis Public Library, The Gateway Early Childhood Alliance, United 4 Children, Urban Sprouts, and WEPOWER.

3.) **Actively participate and bring literacy to the forefront in early childhood initiatives**, including The Gateway Early Childhood Alliance, United 4 Children, Nine PBS, Kids Win MO, MO DESE’s Office of Childhood, City of St. Louis, St. Louis County, WEPOWER , and Childcare Aware of Missouri.

## Summer Learning

1.) Lead a summer 2025 “**One-Hour a Day Summer Literacy Infusion**” program at 12 summer camp sites, with training, mentoring, high-impact tutoring, family engagement opportunities, literacy kits and resources. A large sample of campers will be pre and post assessed in their literacy skills. Add high-impact tutors to the programming.

2.) Create a “**One-Hour a Day Afterschool Literacy Infusion**” model with a focus group of stakeholders.

3.) Survey and provide a list of **summer 2025 literacy activities** for families and educational institutions, distributed by St. Louis County and the City of St. Louis.

## Teacher Preparedness

1) Support school districts, administrators and educators in the implementation of **Missouri Senate Bill 681**, which includes professional development in LETRS training and Reading Success Plans.

2.) **Educate & advocate for literacy support at the state level**, including the science of reading, dyslexia screenings, culturally responsive pedagogy, and student/teacher ratios with the goal of stronger literacy-based legislation.

3.) Pilot a **2025 Teacher Appreciation Event** with the St. Louis Cardinals, St. Louis Public Schools Foundation, and the Missouri Charter School Association.

4.) Provide updated **data** regarding third-grade English Language Arts state assessment scores.

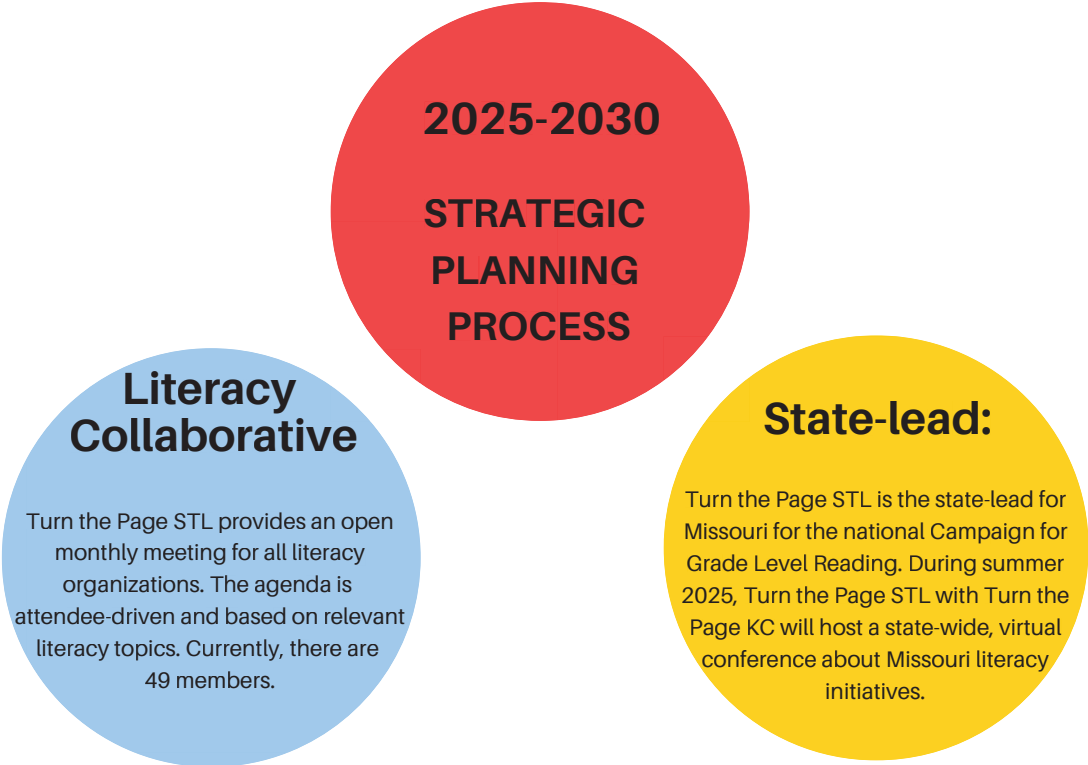
# 2025 Priorities & Activities continued

## Family Engagement

- 1.) Provide #stlreads posters, stickers, handouts, bookmarks, etc. linking families to the Turn the Page STL website, which includes literacy resources.
- 2.) Support and work with grassroots organizations to provide literacy resources at their events, including Eyes Thrive, IFM Clinics, A Red Circle, St. Louis County Library, Little Free Libraries, Nine PBS, school celebrations, among others.
- 3.) Pilot Pro-Literacy’s Learning Hidden Millions program with the Learning Upgrade app to teach families and children how to read together - multigenerational illiteracy in the Normandy Schools Collaborative.

## STL Tutoring Collaborative

- 1.) Hire a full-time staff member to convene and lead the STL Tutoring Collaborative to align and connect **high-impact tutoring programs** with students, families and educators.
- 2.) Seek funding and support for a city-county wide **call to action** for St. Louisans to become tutors.
- 3.) **Match** high-impact tutoring programs with schools.



# Work Team Members

## 2025 Early Educators Appreciation Event Committee

- City of St. Louis
- LUME Institute
- Ready Readers
- RISE
- Southside Early Childhood Center
- St. Louis Community College
- St. Louis County Library
- St. Louis Public Library
- The Gateway Early Childhood Alliance
- United 4 Children
- Urban Sprouts
- WEPOWER

## 2025 Literacy Summer Camp Sites

- Better Family Life
- Gene Slay's Girls & Boys Club - Dutchtown location
- Gene Slay's Girls & Boys Club - Soulard location
- Unleashing Potential - Delmar Divine
- Unleashing Potential - Caroline Mission
- Unleashing Potential - Immanuel Church
- Unleashing Potential - Jackson Park
- Wesley House
- YMCA - Bayer
- YMCA - Carondelet
- YMCA - Emerson
- YMCA - South City

## STL Tutoring Collaborative

- Black Men Read
- E. Des Lee Tutorial Initiative & UMSL's Literacy Clinics
- Hope Education
- Lolly's Place
- Mission St. Louis
- OASIS
- Restored For More
- Smart Kids, Inc.
- St. Louis County Library
- St. Louis Public Library
- Teach For America St. Louis
- The Gathering
- The Crossing
- Webster Student Literacy Corps
- YMCA
- YMCA - Campus Y

## Turn the Page STL with UMSL CIAC and the St. Charles School District Lead the St. Louis Region Childhood Community Leadership Taskforce

Baby & Me LLC, Baden Christian Childcare Center, Beginning Futures, Brentwood EC Center, Bridge Academy Autism Center, Child Care Aware of Missouri, City of St. Louis, Fathers United to Raise Awareness, Ferguson-Florissant School District, Francis Howell School District PAT, Gateway Early Childhood Alliance, Generate Health, Kids Win Missouri, Lutheran Family and Children's Services, Mehlville School District, Missouri School for the Blind, MO DESE, MO Department of Early Childhood, MPACT, Nurses for Newborns, Parkway Schools, PAT National Center, PNC Bank, Riverview Gardens School District, Rockwood School District, School District of University City, Special School District, St. Charles City School District, St. Charles Community College, St. Charles SD – Lewis & Clark Technical Center, St. Louis ARC, St. Louis Area First Steps, St. Louis Mental Health Board, St. Louis Public Schools, S.T.A.R. Coaching, STL Pre-K Collaborative, The Christian Academy, Turn the Page STL, U&I-Rise, UMSL CIAC, United 4 Children, University of Missouri Extension, Urban League of St. Louis, Urban Sprouts, Washington University, WEPOWER, WIC & Nutrition Saint Louis County, and Youth in Need

# #streads

For more information about Turn the Page STL  
and how you can join the movement,

visit us at:

<https://www.turnthepagestl.org/>

And, follow us on:



Lisa Greening  
Executive Director  
Turn the Page STL  
5501 Delmar Boulevard, Suite B500  
St. Louis, Missouri 63112  
St. Louis' chapter of the Campaign for Grade Level Reading  
[lisa.greening@turnthepagestl.org](mailto:lisa.greening@turnthepagestl.org)